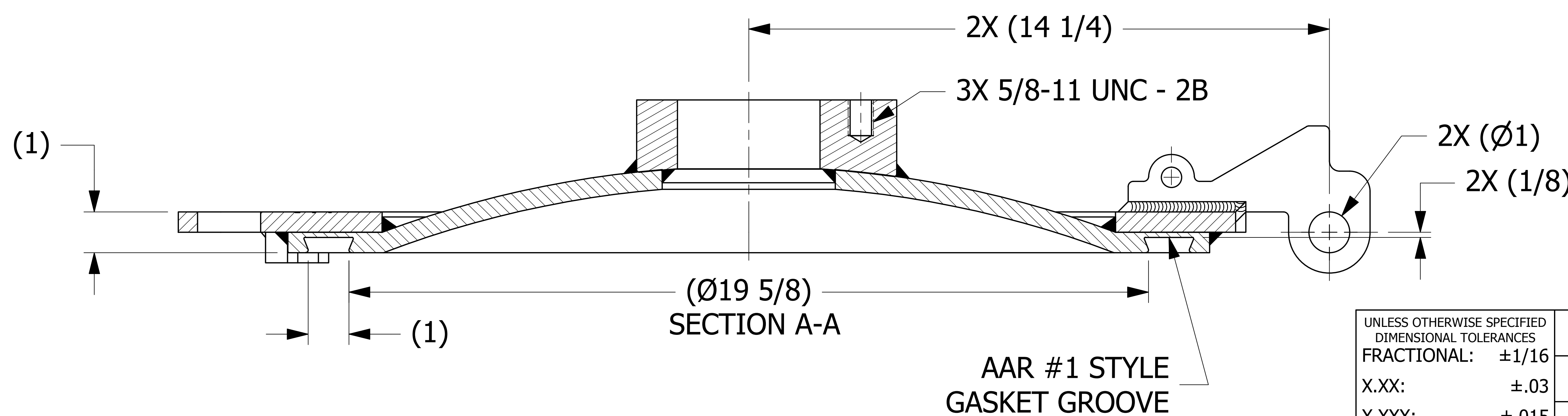
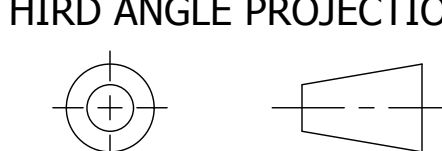


NOTE:
AAR APPROVAL # E-182114.



REV	BY	DATE	DESCRIPTION
M	CHL	1-29-19	REMOVED QAP4A-1 NOTE; Q-2.15.7 WAS QAP4C-1; REPLACED DSS 12 W/D-005 & D-008; AAR # WAS E-089005
L	RJP	11-7-17	HINGE WELD WAS 3/8"; ADDED (1 11/16) & NOTE 6; ADDED "SALCO" TO ENGRAVING
K	JG	4-12-17	TMCDR2066 WAS TMCR206S6 & TMCDQIS6MF; UPDATED NOTES, VIEWS, DIMS
J	JG	8-17-15	REPLACED TMCHS4TR W/ B41297
I	JJK	2-27-12	ADDED NOTE #4 & HEAT/LOT NOTE
H	CHL	10-29-10	ADDED VIEW D & DIM 3/4" TO A29293
G	CHL	11-1-10	UPDATED NOTES, REPLACED A14392 W/A29293, UPDATED WELD SYMBOL, ADDED PART NUMBER TO RING SURFACE
F	AJB	2-24-09	UPDATED SAFETY STOP WELD SPECIFICATION
E	CHL	5-27-08	UPDATED NOTES & ADDED VIEW C
D	CHL	10-25-00	REPLACED A9566 W/ A14392
C	CHL	10-2-00	ADDED SAFETY STOPS & SECTION B-B
B	CHL	8-14-00	CHANGED DIMS 11.69 & 1.06 TO 11.96 & 1.015
A	CHL	3-17-00	ROTATED BOSS 60° & CHANGED HINGE TO NEW STYLE

UNLESS OTHERWISE SPECIFIED
DIMENSIONAL TOLERANCES
FRACTIONAL: ±1/16
X.XX: ±.03
X.XXX: ±.015
ANGULAR: ±1°
DEBURR ALL SHARP EDGES.
ALL MACHINED SURFACES TO
HAVE A 125 RMS FINISH UNLESS
NOTED OTHERWISE.



DRAWN BY:	SAB
CHECKED BY:	ACC
PROTOTYPE BY:	SAB
PROTOTYPE DATE:	11/17/1997
APPROVED FOR PRODUCTION BY:	ACC
PRODUCTION DATE:	11/17/1997

SALCO PRODUCTS, INC.			
MANWAY COVER 20" 6-BOLT			
MATERIAL: 316L SS			
PROJECT #:	970929	SHEET #:	1 OF 1
DRAWING #:	E9278	PART #:	TMC2066
SCALE: 2:3			